

The Consolidated Plan

Consolidated Plans are bound by requirements set by Congress. All activities funded by the Plan must meet at least one of the following National Objectives and the Public Services Cap:

Benefit Low and Moderate Income Persons

Benefits can be provided by:

- Area Benefit - At least 51% of the residents (or less if the "upper quartile" applies to the grantee, are low-to-moderate income.
- Low-to-Moderate Income Limited Clientel - at least 51% of the beneficiaries of the activity are low-to-moderate income. (Examples: Elderly persons, abused children, homeless persons, victims of domestic violence)
- Housing for Low-to Moderate Income Households. (Examples: All assisted single unit structures must be occupied by L/M income households. For structures with two or more units, at least 51% must be occupied by L/M households if Community Development Block Grant (CDBG) funding is used. The HOME Program funding has different requirements.)
- Job Creation or Retention Activities for Low-to-Moderate Income Persons.



Public Services Cap

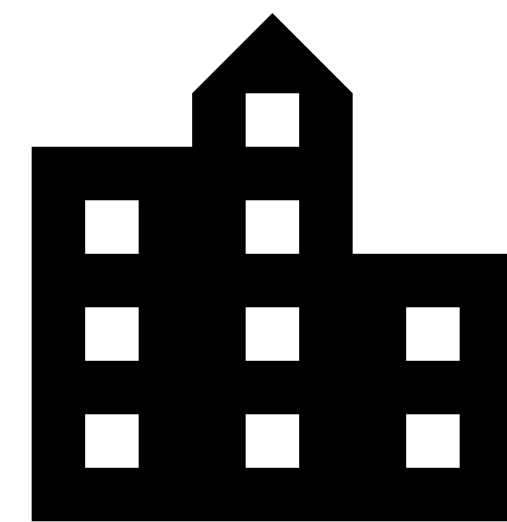
Public Services are important activities that can be provided under the Benefit to Low and Moderate Income persons. However, we are not allowed to spend more than 15% of CDBG funds awarded for the year plus 15% of our program income received for the preceeding year for Public Services.



Prevention/Elimination of Slums or Blight

Benefits can be provided for:

- Addressing Slums or Blight on an Area Basis
- Addressing Slums or Blight on a Spot Basis
- Addressing Slums or Blight in an Urban Renewal Area



Urgent Needs

Benefits can be provided under the following conditions: There is a serious or immediate threat to the health or welfare of the community, which is of recent origin or recently became urgent, the grantee is unable to finance the activity on its own, and other resources of funding are not available to carry out the activity.

